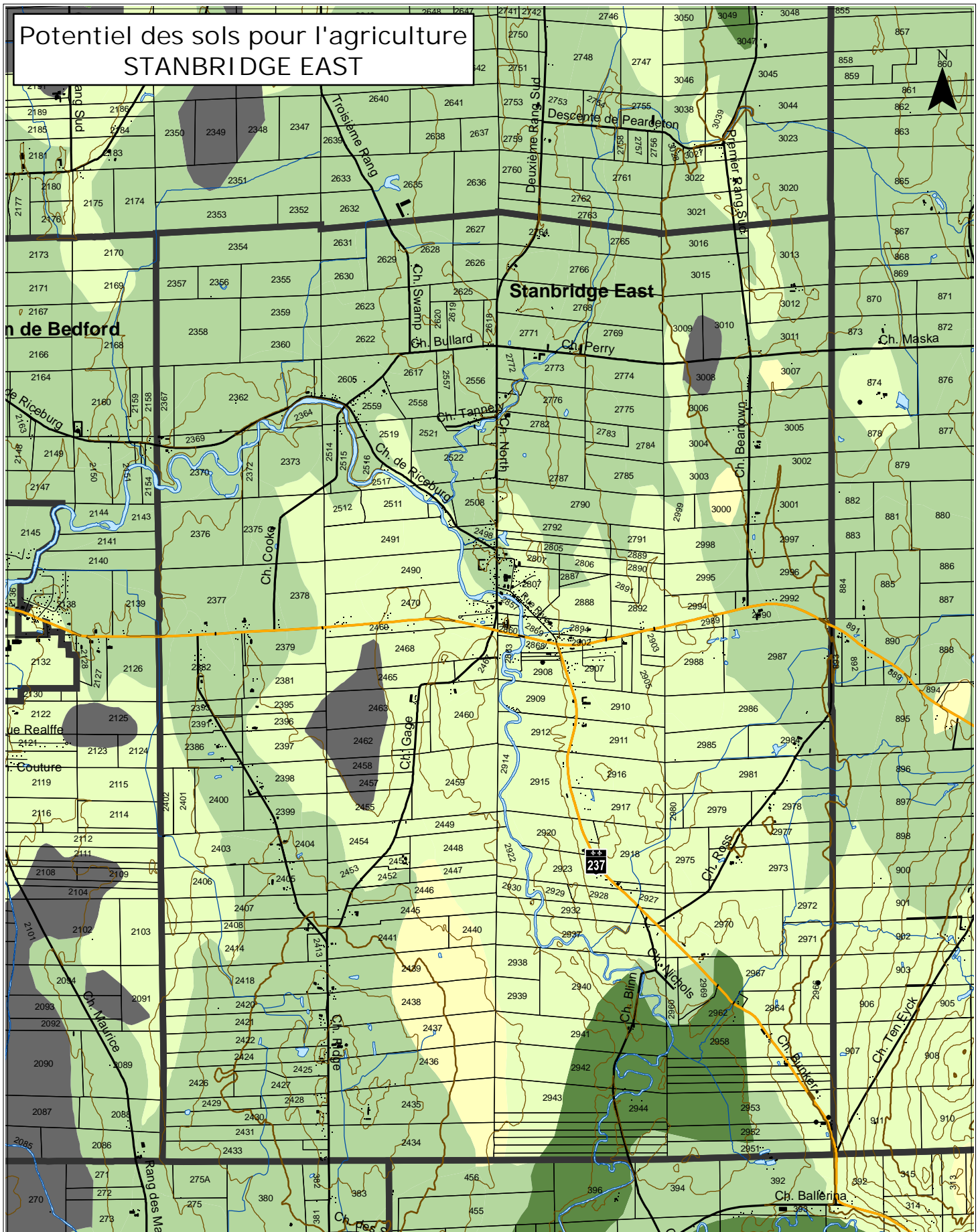


# Potentiel des sols pour l'agriculture STANBRIDGE EAST



SOURCE:  
Photocartotheque québécoise  
Ministère des Ressources Naturelles  
Cartes topographiques  
1:20 000, MTM 8, NAD 83, 2000  
ARDA  
Classification des sols  
1:250 000, MTM 8 NAD 27, 1973

## Potentiel des sols

- |   |   |
|---|---|
| <span style="display: inline-block; width: 15px; height: 15px; background-color: #006400; margin-right: 5px;"></span> Très bon (1 et 2) | <span style="display: inline-block; width: 15px; height: 15px; background-color: #90EE90; margin-right: 5px;"></span> Moyen (4 et 5)  |
| <span style="display: inline-block; width: 15px; height: 15px; background-color: #90EE90; margin-right: 5px;"></span> Bon (3)           | <span style="display: inline-block; width: 15px; height: 15px; background-color: #696969; margin-right: 5px;"></span> Terre organique |

**Carte 1**

**1:45 000**

